



**VALVTECHNIK & SERVICES**



# Pipeline Strainers

Catalogue & Technical Specifications





# VALVTECHNIK & SERVICES

Welcome

Valvtechnik & Services Company

We are very much pleased to introduce ourselves as one of the manufacturer of pipe line strainer suitable for high performance, high temperature and highly corrosive fluid joints.

In this connection as you are aware we are in a position to manufacture and export, various types of Y Strainers, Basket Strainers, Duplex Strainers, 'Tee' Type strainers, conical strainer, suction diffuser and mud box in different metal grades according to the customer requirements.

Our catalogue offers Y Strainer, Tee Strainer, Basket Strainer and Conical Strainer, suction diffuser and mud box in Cast iron, carbon steel, low alloy steel, bronze, stainless steel and special alloys with detailed information, which help customer to identify and order the correct strainer For a unique configuration or size. unusually high pressure, or a special alloy, we have the capability and experience to economically fabricate a strainer to meet your needs.

The strainers offered by us are designed and conform to the standards of ASME Section VIII. Our Engineering team extends its complete assistance and support to the end customer at all levels in the process of execution of an order.

Besides offering complete strainers we also fabricate and supply the strainer inserts as spare parts for the existing strainers.

We request you to kindly register our name in your approved vendor list for supply of Industrial strainers. We now request you to kindly send your valuable purchase Enquiry / orders for which we assure good quality strainers in time.

We are herewith enclosing our product details along with clients list for your kind consideration.

Thanking you and assuring our best services at all times.



We are supplying to Refineries, Petrochemical Industries, Gas Lines, Air Lines, Sugar, Equipment manufactures, Power, Paper, Steel sectors and Pharmaceuticals in the name of Valvtechnik & Services.



## OUR CLIENTS

Nerolac Paints Ltd.,

Nippon Paints Ltd,

Sun Pharmaceuticals Ltd,

KanchiKarpooram Ltd,

Orchid Chemicals,

Madras Fertilizers Ltd,

E.I.D.Parry (India) Ltd,

Chennai Petroleum Corporation Ltd,

TANFAC Industries Ltd,

Scigenics (India) Pvt Ltd,

Southern Ceramics Pvt. Ltd,

Pioneer Industrial enterprises,

Oliver Valves (UK),

FuturaFibres,

Shasun Chemicals Ltd

and more.

## STRAINER TYPES

- 1) Y STRAINER FABRICATED & CASTING
- 2) TEE STRAINER FABRICATED & CASTING
- 3) BASKET STRAINER FABRICATED & CASTING
- 4) DUPLEX STRAINER FABRICATED & CASTING

### DUPLEX TYPES:

- DUPLEX STRAINER WITH BALL VALVES
  - DUPLEX STRAINER WITH BUTTERFLY VALVES
  - DUPLEX STRAINER WITH 6WAY DIVERTER VALVES
  - DUPLEX STRAINER WITH SLIDING GATE
- 5) SUCTION DIFFUSER FABRICATED & CASTING
  - 6) MUD BOX FABRICATED & CASTING







**Y-STRAINER**



### Design Features:

These types of strainers are named after their shape and normally used for coarse filtration but with large filtration area can be used with fine mesh also. Body of Y strainer is normally of cast iron, cast carbon steel or stainless steel in various material grades with flanged end, threaded end, butt weld end and socket weld type end connection. Fabricated Y strainers are also available with high filtration area and less pressure drop.

- Strainer body meets ASME B16.5
- SS 304 or SS 316 mesh screens are standard. Perforated plate screens are optional.
- Drain/Blow-off connection furnished with plug as standard.
- Generous screen area and properly proportioned straining chamber to minimize initial pressure drop while maximizing time between cleanings.
- Compact end to end dimension

### Manufacturing Size Range:

1/2"(15NB)upto24" (600NB)

Larger sizes will be fabricated upon request.

### Pressure Rating of Valve:

150#/300#/600#/900#/1500#/2500#

### End Connection:

Flanged End to ANSI B16.5,

BS10 Table D/E/F/H

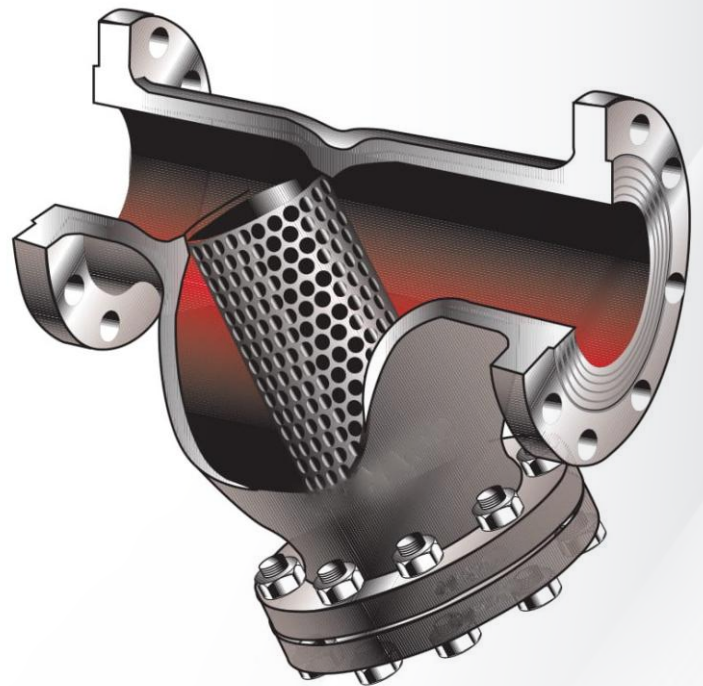
PN6/PN10/PN16/PN25/PN40/PN64

DIN Standard / JIS Standard / IS Standard

Screw-Threaded End to ANSI B1.20.1

Socket Weld End to ANSI B16.11

Butt Weld End to ANSI B16.25





# Y-STRAINER

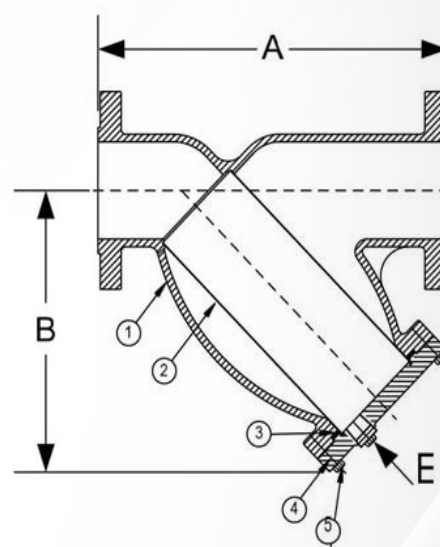


**PARTS LIST**

ITEM	DESCRIPTION	MATERIAL
1*	BODY	WCB / CF8 / CF8M / CF3M / CN7M
2	SCREEN	SS316,SDSS,DSS,MONAL etc.,
3	GASKET	SPIRAL WOUND STAINLESS STEEL (304)
4	COVER	WCB / CF8 / CF8M / CF3 / CN7M
5	HEX HEAD CAP SCREW	STAINLESS STEEL (ASTM A 193, GRADE B8)

Optional: Blow-off Plug, Stainless Steel (304)

\*Optional Body Materials Available in Series SS, Alloy 20, Inconel, Monel Series, Hastelloy B2, Titanium, etc.,



SIZE		DIMENSIONS										WEIGHTS			
		A				B				E					
		150#		300#		150#		300#		150# & 300#		150#		300#	
in	mm	in	mm	in	mm	in	mm	in	mm	in	mm	lbs	kgs	lbs	kgs
1/2	15	6-1/2	135	6-1/8	156	3-3/4	95	3-3/4	95	3/8	10	7	3	6	3
3/4	20	7-3/8	145	7-3/4	197	4-1/4	108	4-1/4	108	1/2	15	11	5	13	6
1	25	7-3/8	165	7-7/8	200	4-1/4	110	4-1/4	108	1/2	15	11	5	13	6
1-1/4	32	7	178	8-1/8	206	5-1/8	130	5-1/8	130	1/2	15	12	5	19	9
1-1/2	40	7-1/8	200	8-1/4	210	5-1/8	127	5-1/8	130	1/2	15	14	6	19	9
2	50	7-7/8	234	9-1/2	241	6	152	6	152	1/2	15	22	10	33	15
2-1/2	65	9-3/4	248	10-3/8	264	7	178	7	178	1	25	32	15	44	20
3	80	10-1/16	269	12	305	7-7/16	191	7-5/16	186	1	25	41	19	58	26
4	100	12-1/8	308	14-1/2	368	8-15/16	227	8-15/16	227	1-1/2	40	63	29	90	41
5	125	15-1/2	394	19-5/16	491	13-1/32	331	13-1/32	331	2	50	111	50	180	82
6	150	18-1/2	394	19-5/16	491	13-1/4	337	13-1/4	337	2	50	136	62	180	82
8	200	21-3/8	498	23-3/8	594	15-1/2	394	15-1/2	394	2	50	212	96	304	138
10	250	26	660	27-3/8	695	18-7/16	468	18-7/16	468	2	50	280	127	470	213
12	300	29-7/8	759	32	813	21-5/8	549	21-5/8	549	2	50	460	209	709	322
14	350	34-1/2	876	36	914	25	635	25	635	2	50	980	445	1300	590



# TEE-STRAINER



### Design Features:

- Tee Strainer offers several advantages over other strainer designs. The strainer is very compact, important in applications where space is restricted. Unlike most other strainers, Tee Strainer can be used in both vertical and horizontal installations. A real time saving feature Tee Strainer is that the strainer screen can be cleaned without draining the strainer vessel. VTS Tee strainers are available in various material grades.
- Strainer is fabricated to your specification. Optional materials, end connections and accessories are available.
- Strainer body meets ASME B16.5
- 304 SS or 316 SS mesh screens are standard. Perforated plate screens are optional.
- Drain/Blow-off connection furnished with plug as standard.
- Generous screen area and properly proportioned straining chamber to minimize initial pressure drop while maximizing time between cleanings.
- Compact end to end dimension.

### Manufacturing Size Range:

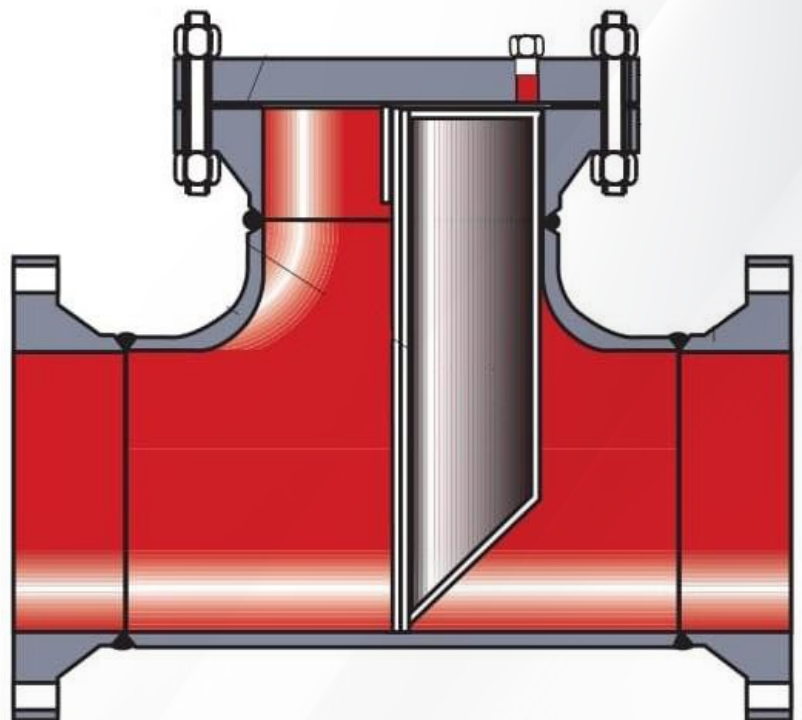
- 1/2" (15NB) up to 24" (600NB)
- Larger Sizes will be fabricated upon request.

### Pressure Rating of Valve:

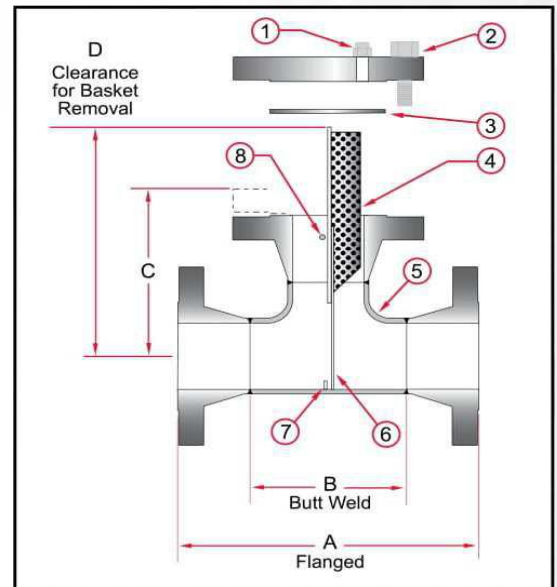
- 150# /300#/600#/900#/1500#/2500#

### End Connection:

- Flanged End to ANSI B16.5,
- BS10 Table D/E/F/H
- PN6/PN10/PN16/PN25/PN40/PN64
- DIN Standard / JIS Standard / IS Standard
- Screwed-Threaded End to ANSI B1.20.1
- Socket Weld End to ANSI B16.11
- Butt Weld End to ANSI B16.25



# TEE-STRAINER



## Manufacturing Size Range:

2" (50NB) up to 24" (600NB)

Larger Sizes will be fabricated upon request.

Construction								
Item	1	2	3	4	5	6	7	8
Description	Vent Assembly	Bolting	Gasket	Basket Assembly	Body Assembly	Body Ring	Screen Guide	Cross Bar

Dimensions (Inches)									
Size		A		B		C		D	
Inches	Prefix	150	300	150	300	150	300	150	300
2	0200	10	10 1/2	5	5	5 7/8	6 1/4	13	13
2 1/2	0250	11 1/2	12	6	6	6 3/4	7 1/8	13	13
3	0300	12 1/4	13	6 3/4	6 3/4	7 3/16	7 3/4	14	14
4	0400	14 1/4	15	8 1/4	8 1/4	8 3/16	8 7/8	16	16
5	0500	16 3/4	17 1/2	9 3/4	9 3/4	9 7/16	10 1/4	19	19
6	0600	18 1/4	19	11 1/4	11 1/4	10 1/4	11 1/16	22	22
8	0800	22	22 3/4	14	14	12 1/4	13 1/8	25	25
10	1000	25	26 1/4	17	17	13 13/16	15 1/8	29	29
12	1200	29	30 1/4	20	20	15 7/8	17 1/4	31	31
14	1400	32	33 1/4	22	22	17 1/2	18 7/8	38	38
16	1600	34	35 1/2	24	24	18 9/16	20 1/8	41	41
18	1800	38	39 1/2	27	27	20 11/16	22 1/4	46	46
20	2000	41 3/8	42 3/4	30	30	22 9/16	24	51	51
24	2400	46	47 1/4	34	34	25	26 1/2	56	56

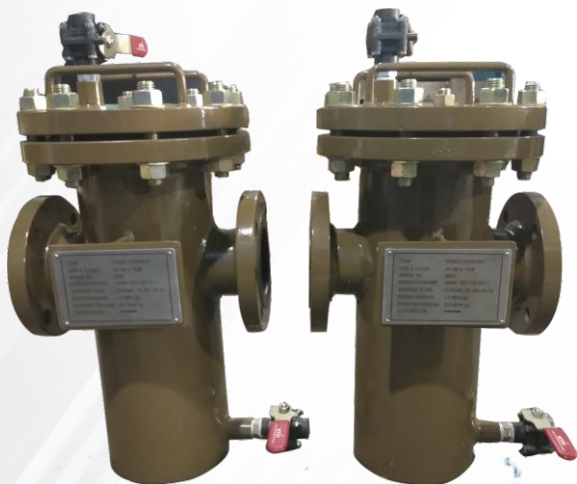


# BASKET STRAINER



600NB  
CL300  
C95800  
CA015  
SBA

# BASKET STRAINER



### Design Features:

- Basket strainer is used where straining & filtering of a wide variety of fluids, to retain solids of almost any size. All baskets are easily removable & cleanable. The strainer cover is held down by a clamping yoke which is sturdy enough to hold full line pressure and yet, which can be quickly loosened or tightened by hand. Bolted covers are also furnished with basket strainers and they cost less than yoke covers. Basket size can be tailored to hold sufficient solids for the required time between cleanouts. VTS Basket Strainer is fabricated to your specification. Optional materials, end connections and accessories are available.
- Strainer body meets ASME B16.5
- 304 SS or 316 SS mesh screens are standard. Perforated plate screens are optional.
- Drain/Blow-off connection furnished with plug as standard.
- Generous screen area and properly proportioned straining chamber to minimize initial pressure drop while maximizing time between cleanings.
- Compact end to end dimension

### Manufacturing Size Range:

- 1/2" (15NB) upto 24" (600NB)
- Larger sizes will be fabricated upon request.

### Pressure Rating of Valve:

- 150#/300#/600#/900#/1500#/2500#

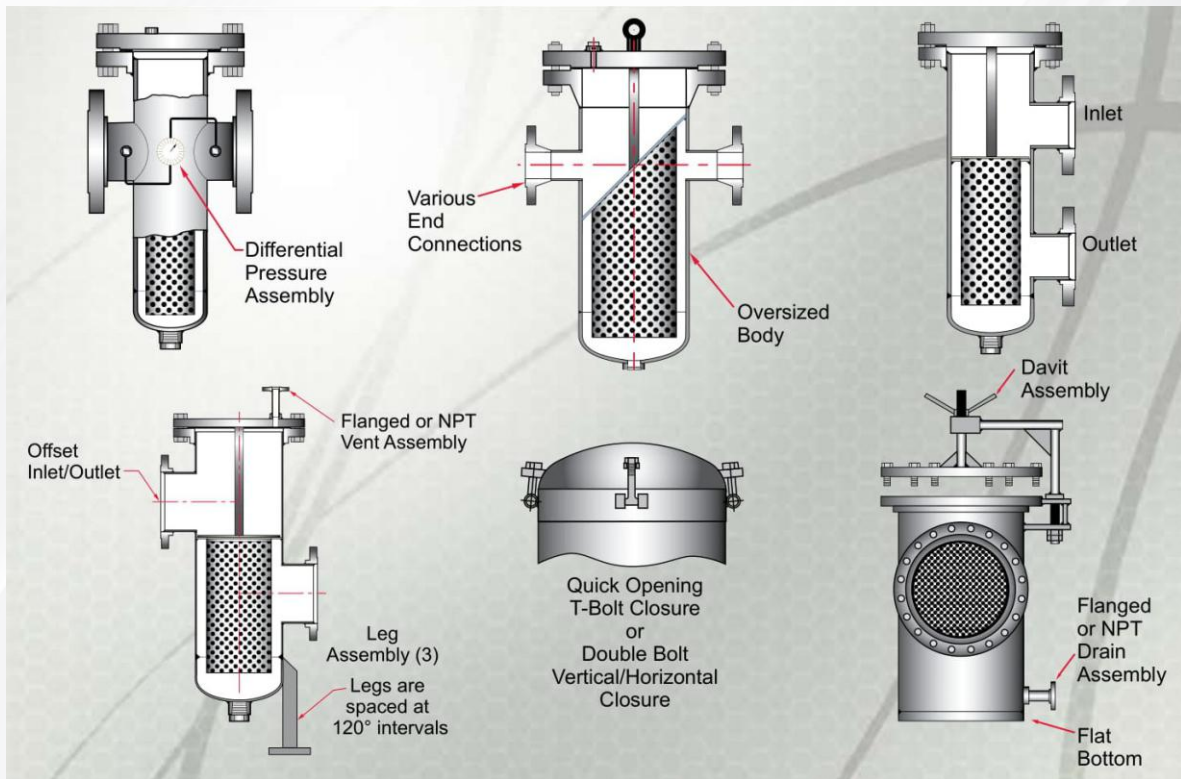
### End Connection:

- Flanged End to ANSI B16.5,
- BS10 Table D/E/F/H
- PN6/PN10/PN16/PN25/PN40/PN64
- DIN Standard / JIS Standard / IS Standard
- Screwed -Threaded End to ANSI B1.20.1
- Socket Weld End to ANSI B16.11
- Butt Weld End to ANSI B16.25





# CUSTOM STRAINER OPTIONS

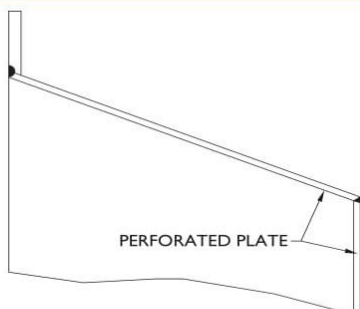


## Optional Features:

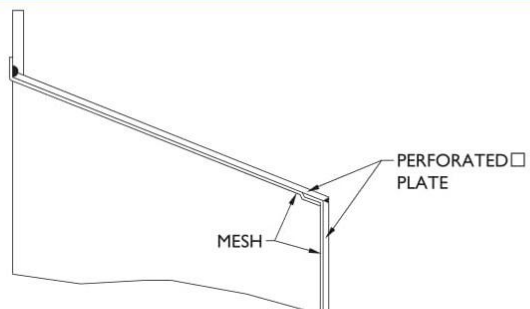
- Quick opening covers
- Body materials of Stainless Steel or special alloys
- Custom Baskets of 316 SS, Monel, and special alloys
- Davit Assembly
- Various end connections available including Weld Neck Flanges, Socket Weld and Ring Type Joint connections
- Larger sizes available
- Single or multiple baskets
- Oversized body design to reduce pressure drop
- Automatic air vent
- Pressure gauges or differential pressure switches
- Special internal and external coatings
- Many codes and designs are available
- Special Internal Cladding , Monel , Inconel , Super Duplex.,etc

# CONICAL STRAINER

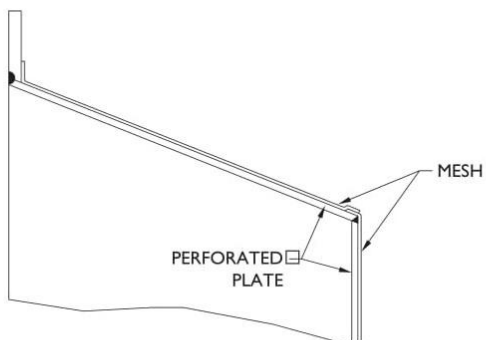
## Standard Construction Details



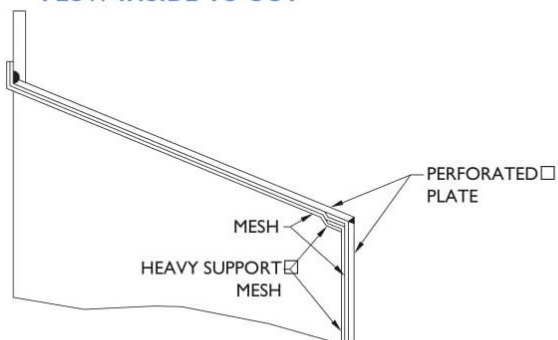
**PERFORATED PLATE**



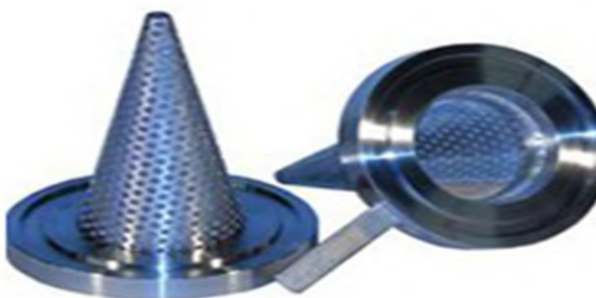
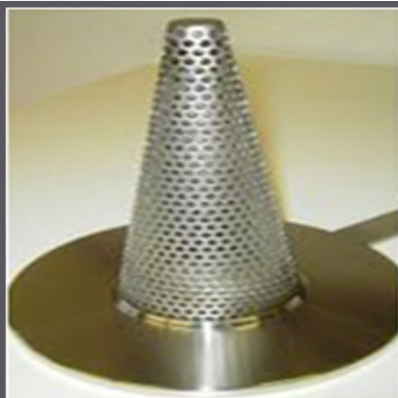
**MESH INSIDE  
FLOW INSIDE TO OUT**



**MESH OUTSIDE  
FLOW OUTSIDE TO IN**

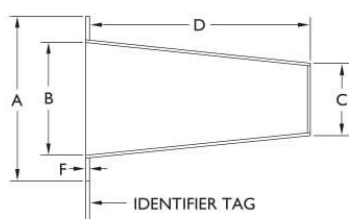


**MESH LINED  
BI-DIRECTIONAL FLOW**

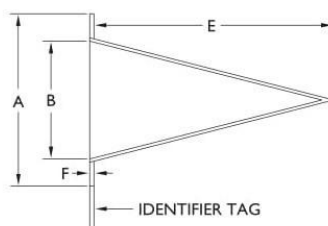




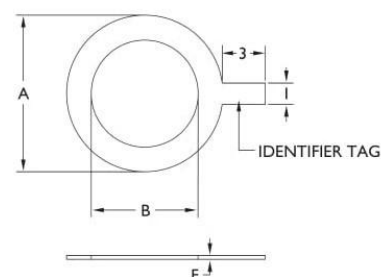
# CONICAL STRAINER



**BASKET TYPE (TB)**



**CONICAL TYPE (TC)**



**PLATE TYPE (TP)**

## Standard Screens

Size Range	Opening	Gauge Thickness
3/4" - 8" (20mm - 200mm)	0.125 in. (3.2mm)	22
10" - 24" (250mm - 600mm)	0.125 in. (3.2mm)	16

## Parts List and Standard Materials

Size in. (mm)	A (O.D.) in. (mm)				B (I.D.) in. (mm)	C in. (mm)	D (Basket Length) in. (mm)				E (Cone Length) in. (mm)				F <sup>2</sup> in. (mm)	Weight Lbs. (Kg.)
	150/	300#	600#	900#			100%	150%	200%	300%	100%	150%	200%	300%		
3/4"	2.13	2.50	2.63	2.63	0.63	0.31	0.75	1.13	1.50	2.25	1.13	1.69	2.25	3.38	0.13	0.5
20	54	64	67	67	16	8	19	29	38	57	29	43	57	86	3	0.2
1"	2.50	2.75	3.00	3.00	0.75	0.38	1.13	1.69	2.25	3.38	1.63	2.50	3.31	5.00	0.13	0.5
25	64	70	76	76	19	10	29	43	57	86	41	64	84	127	3	0.2
1 1/2"	3.25	3.63	3.75	3.75	1.25	0.63	1.50	2.25	3.00	4.50	2.19	3.38	4.50	6.75	0.13	0.5
40	83	92	95	95	32	16	38	57	76	114	56	86	114	171	3	0.2
2"	4.00	4.25	5.50	5.50	1.75	0.88	2.00	3.00	4.00	6.00	3.00	4.50	6.00	9.13	0.13	0.5
50	102	108	140	140	44	22	51	76	102	152	76	114	152	232	3	0.2
2 1/2"	4.75	5.00	6.38	6.38	2.25	1.13	2.19	3.37	4.50	6.75	3.19	5.00	6.69	10.13	0.13	1
65	121	127	162	162	57	29	56	86	114	171	81	127	170	257	3	0.5
3"	5.25	5.75	6.50	6.75	2.75	1.38	2.75	4.25	5.69	8.50	4.00	6.25	8.50	12.75	0.13	1
80	133	146	165	171	70	35	70	1.08	145	216	102	159	216	324	3	0.5
4"	6.75	7.50	8.00	8.13	3.75	1.88	3.50	5.32	7.19	11.00	5.13	7.88	10.63	17.00	0.13	2
100	171	191	203	206	95	48	89	13.5	183	279	130	200	270	432	3	0.9
5"	7.63	9.38	9.63	9.88	4.63	2.31	4.50	6.75	9.13	14.00	6.50	10.13	14.00	21.00	0.13	2
125	194	238	244	251	117	59	114	171	232	356	165	257	356	533	3	0.9
6"	8.63	10.37	11.25	11.00	5.38	2.69	5.50	8.50	11.37	17.00	8.13	13.00	17.00	26.00	0.13	3
150	219	263	286	279	137	68	140	216	289	432	207	330	432	660	3	1.4
8"	10.87	12.50	14.00	13.75	7.38	3.69	7.00	10.69	15.00	22.00	10.19	16.00	22.00	33.00	0.13	5
200	276	318	356	349	187	94	178	272	381	559	259	406	559	838	3	2.3
10"	13.25	15.63	17.00	17.00	9.38	4.69	8.63	14.00	18.00	27.00	13.00	20.00	27.00	40.00	0.13	7
250	337	397	432	432	238	119	219	356	457	686	330	508	686	1016	3	3.2
12"	16.00	17.87	19.50	20.37	11.00	5.50	10.50	17.00	22.00	33.00	16.00	24.00	33.00	49.00	0.13	11
300	406	454	495	517	279	140	267	432	559	838	406	610	838	1245	3	5.0
14"	17.37	19.00	20.37	22.62	12.25	6.13	11.50	18.00	24.00	36.00	17.00	27.00	36.00	54.00	0.13	12
350	441	483	517	575	311	156	292	457	610	914	432	686	914	1372	3	5.4
16"	20.12	21.87	22.50	25.13	14.00	7.00	14.00	21.00	28.00	42.00	20.00	31.00	41.00	62.00	0.13	16
400	511	555	572	638	356	178	356	533	711	1067	508	787	1041	1575	3	7.3
18"	21.25	23.75	25.00	27.63	15.75	7.88	16.00	24.00	32.00	47.00	23.00	35.00	47.00	71.00	0.13	20
450	540	603	635	702	400	200	406	610	813	1194	584	889	1194	1803	3	9.1
20"	23.50	26.62	27.38	29.63	17.50	8.75	17.00	27.00	35.00	53.00	25.00	39.00	53.00	79.00	0.13	26
500	597	676	695	753	445	222	432	686	889	1346	635	991	1346	2007	3	11.8
24"	27.87	30.87	32.88	35.38	21.25	10.63	21.00	32.00	42.00	64.00	30.00	47.00	63.00	95.00	0.13	30
600	708	784	835	899	540	270	533	813	1067	1626	762	1194	1600	2413	3	13.6

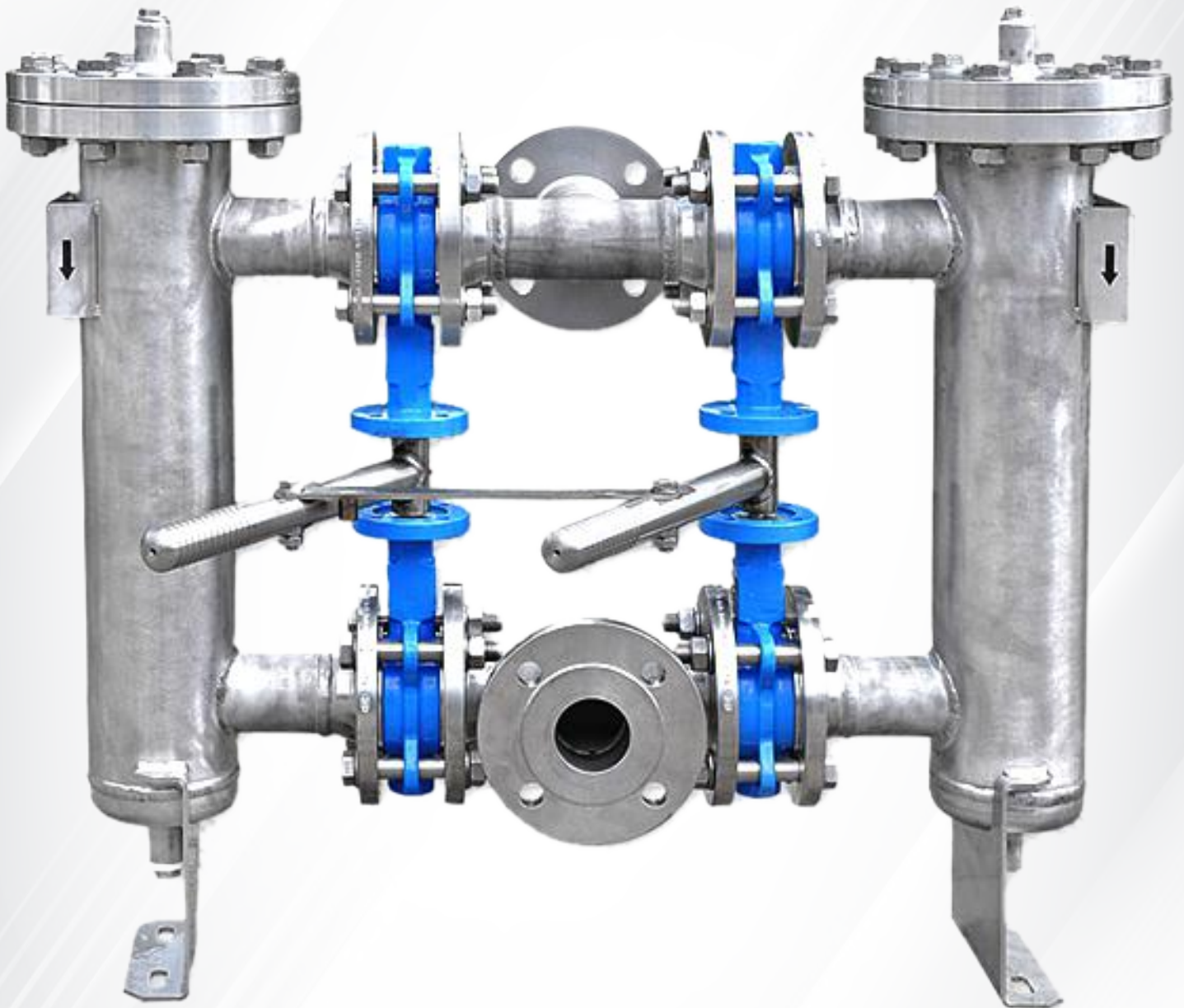
Strainers are used in Steam, water, oil or gas where protection from foreign matter in a pipeline is required. Perforated Sheets are rolled and formed into a conical shape with additional layers of wire mesh spot welded to the conical strainer. These strainers have the desired open area and are fabricated to withstand the required pressure drop. Additional reinforcements can be made on the strainers if required.



# DUPLEX STRAINER WITH BALL VALVES



# DUPLEX STRAINER WITH BUTTERFLY VALVES





## Features

The duplex strainer features four butterfly valves for positive shutoff of one body while the other body continues to filter your flow of liquids. The butterfly valves can be independently operated or can be lined and synchronized using one gear operator to rotate all at the same time. The baskets have a large capacity, which allows longer periods of time between cleanings. The single basket design is easily and quickly cleaned. Standard basket material is stainless steel with special materials available on application.

## Installation

1. Position strainer to match flanged connections.
2. When alignment is correct (inlet and outlet headers), flanges can be bolted when appropriate gaskets are placed between the flanges.
3. When the unit is bolted to the pipes, supports to the strainer should be bolted to the floor.

## Operation

1. Strainer should be filled with fluid slowly, while venting the air.
2. When the strainer is filled, vents should be closed. Both chambers need to be filled.
3. Rotate hand wheel to the stop. This will permit the inflow to enter only one side leaving the other basket clean and ready to handle the flow should the basket straining become clogged.
4. To change over to the clean basket, rotate the hand wheel in the opposite direction until the stop is contacted.
5. If used, pressure gauges indicate pressure loss. When differential reaches 10 PSI, change to the clean side.
6. When the dirty side basket needs to be removed, the following steps need to be observed.

## Maintenance

1. Keep basket screens clean for best performance.
2. Maintain extra gaskets for blind covers and O-rings for quick open covers.
3. A spare basket screen allows for shorter downtime in production

## Service Recommendation

The Duplex strainer is designed for use in fluid handling systems where the flow cannot be shut off for basket cleaning.

## Manufacturing Size Range:

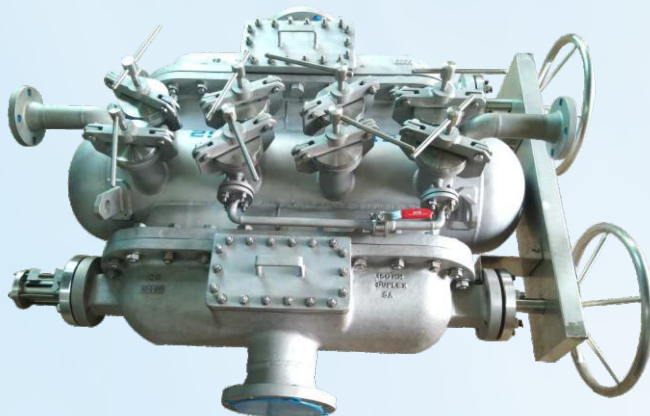
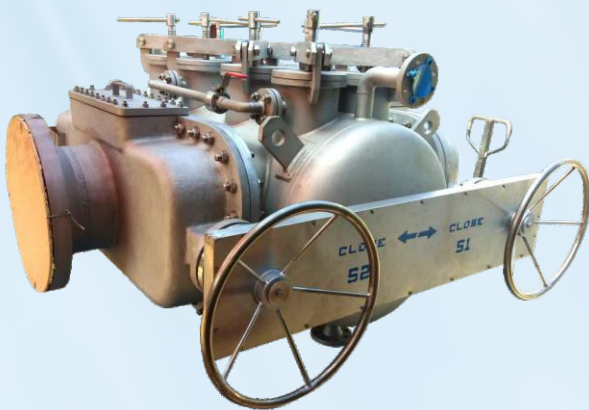
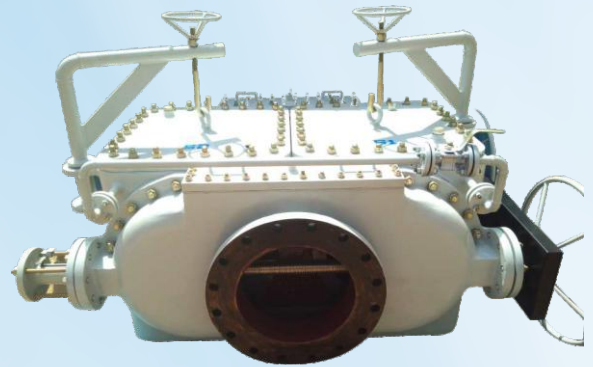
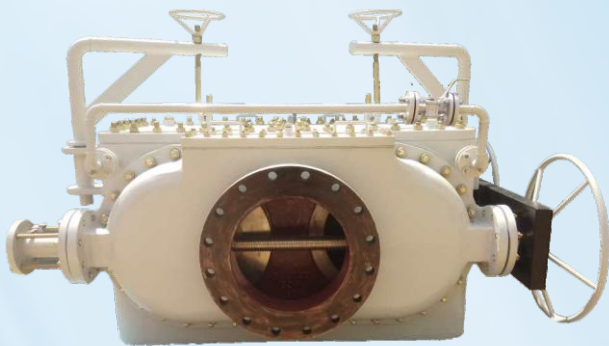
- 1/2" (15NB) up to 24" (600NB)



# DUPLEX STRAINER WITH 6WAY DIVERTER VALVES



# DUPLEX STRAINER WITH SLIDING GATE





# SUCTION DIFFUSER



## Manufacturing Size Range:

- 1/2" to 24" CL 150# / 300# / PN-10 / PN-16

## Features:

Suction diffusers mounts to the suction side of a pump in either a horizontal or vertical position. Suction Diffusers incorporate the functions of a strainer, flow straightener, elbow and pipe reducer in one compact unit thereby reducing installation costs.

It is designed to remove any foreign matter that may be hazardous to the pump or other system components, while providing the proper flow conditions to the pump. Suction Diffusers are available in cast iron configured to replace a standard 90° elbow as well as in fabricated carbon steel or stainless steel customized to suit your installation.



# MUD BOX



## **Manufacturing Size Range:**

- 1/2" to 16" (PN-10 & PN-16) #

## **Features:**

Mud box strainer helps to protect marine systems from damage by filtering debris and large particles in suction and discharge lines for sea cooling and bilge systems.

It is possible to get the strainer basket with different mesh size.

The box is fitted with a removable stainless steel filter basket and a drain plug for easy maintenance and cleaning.

## **Benefits:**

Drilled to PN10&PN16

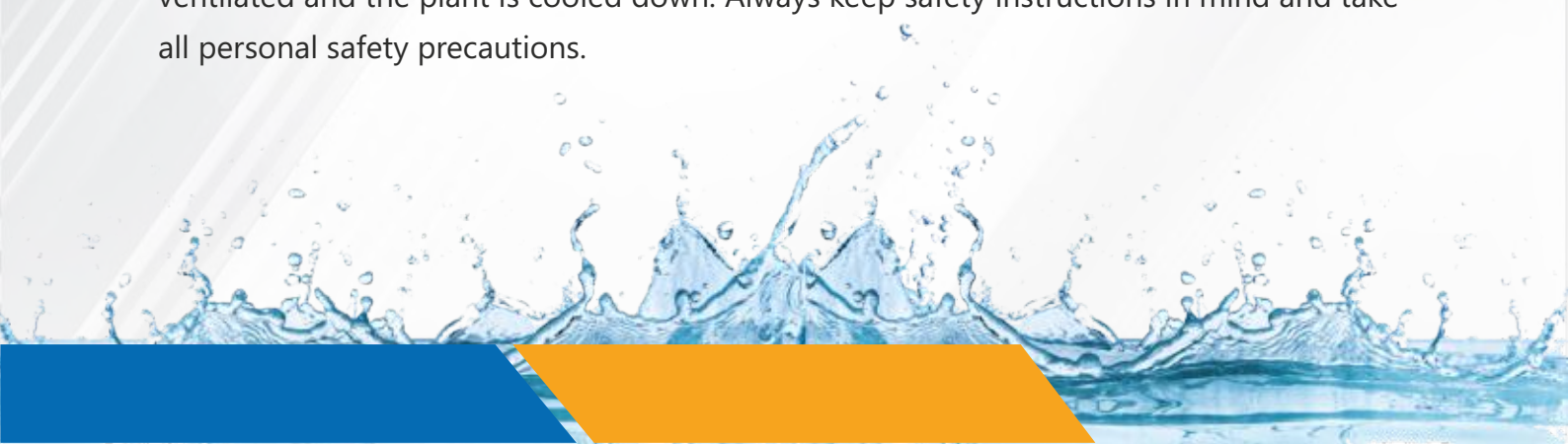
Removable basket easy cleaning

Drain plug

Quality & reliable product

## **Maintenance:**

Before starting any service jobs, make sure that the medium supply to the pipeline is cut off, pressure was decreased to ambient pressure, the pipeline is completely cleaned and ventilated and the plant is cooled down. Always keep safety instructions in mind and take all personal safety precautions.





#### NOTE

While every effort has been made to ensure the accuracy of the information within the publication, the use of the information is at the reader risk and no warranty is implied or expressed by valvtechnik & services with respect to the use of information contained herein. The information in this publication is subject to change or modification without notice.

## VALVTECHNIK & SERVICES

Plot No: 19 B, Govindarajan Street, Ambal Nagar,  
Periyapanicherry, Kundratur Road, Chennai - 600 128

Cell: 09444150328 / 09171414419

GST.NO.33AGYPM8760D1ZX

Email: [valvtechnik@gmail.com](mailto:valvtechnik@gmail.com) / [ntivchennai@gmail.com](mailto:ntivchennai@gmail.com)

Web : [www.newtechvalves.com](http://www.newtechvalves.com)

# 16" DUPLEX STRAINER



BODY	-Super Duplex SS S32750
COVER FLANGE	- Super Duplex SS S32750
FILTER	-SDSS
GASKET	-Spiral Wound ss316 Graphite
FASTENER	-ASTM A193 Gr.B8M/A194 Gr.2M
DRAIN PLUG	- 2" CL150# SDSS FLANGE
VENT PLUG	- 2" CL150# SDSS FLANGE
VALVE SEAT	-Super Duplex SS S32750
VALVE DISC	-Super Duplex SS S32750
END CONN	-16" ASME B16.5 CL150#
EQUALIZING VALVE	- Super Duplex SS S32750
SADDLE SUPPORT	- SS316
LIFTING LUGS	- SS316





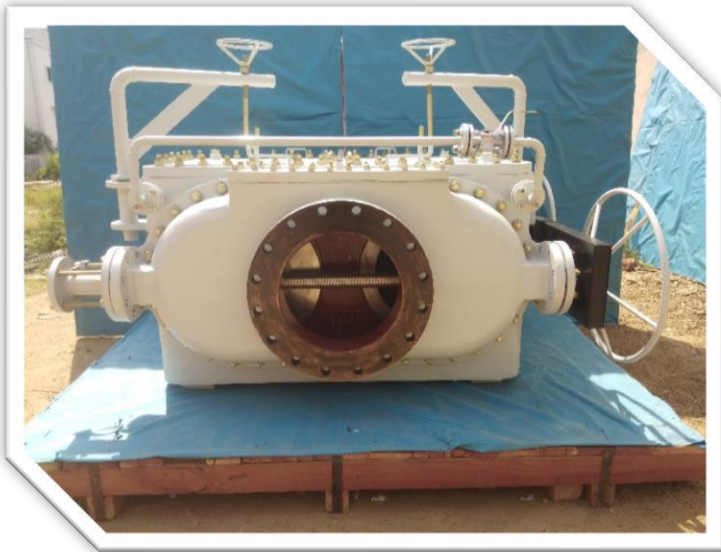
## 6" DUPLEX STRAINER



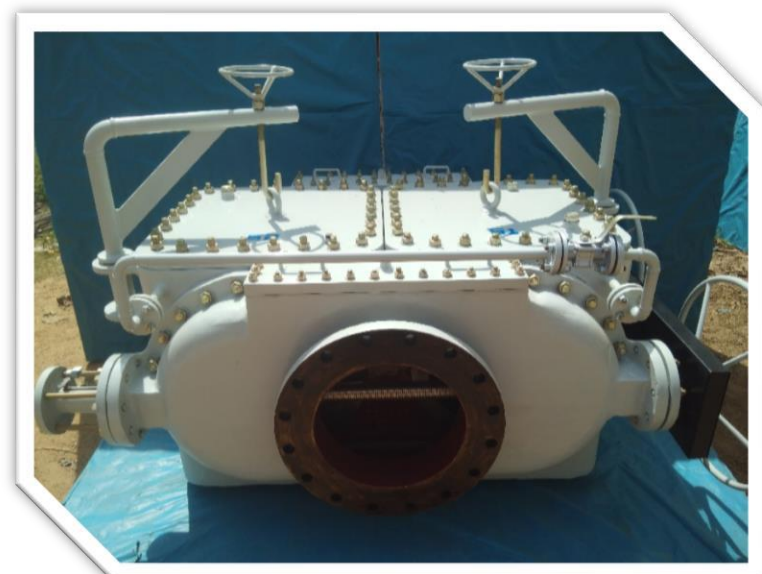
BODY	-Super Duplex SS S32750
COVER FLANGE	- Super Duplex SS S32750
FILTER	-SDSS
GASKET	-Spiral Wound ss316 Graphite
FASTENER	-ASTM A193 Gr.B8M/A194 Gr.2M
DRAIN PLUG	- 2" CL150# SDSS FLANGE
VENT PLUG	- 2" CL150# SDSS FLANGE
VALVE SEAT	-Super Duplex SS S32750
VALVE DISC	-Super Duplex SS S32750
END CONNECTION	-6" ASME B16.5 CL150#
EQUALIZING VALVE	- Super Duplex SS S32750
SADDLE SUPPORT	-SS316
LIFTING LUGS	-SS316



# 16" DUPLEX STRAINER



BODY	-ASTM A216 Gr.WCB
COVER FLANGE	- ASTM A216 Gr.WCB
FILTER	-SS316
GASKET	-Neoprene Rubber
FASTENER	-ASTM A 193 Gr.B7/ A194 Gr.2H
DRAIN PLUG	- 1" Screwed With Plug (NPT F)
VENT PLUG	- 1 " Screwed With Plug (NPT F)
VALVE SEAT	-PTFE
VALVE DISC	-SS316
END CONNECTION	-16" ASME B16.5 CL150#
DAVIT ARM	-ASTM A105 Gr.B-1.5" *Sch160





## DUPLEX STRAINER



3" DUPLEX STRAINER WITH 3WAY BALL VALVES

BODY	-Carbon Steel
COVER FLANGE	- Carbon Steel
FILTER	-SS316
GASKET	-Spiral Wound SS316 Graphite Filled
FASTENERS	-ASTM A 193 Gr.B8M/ A194 Gr.8M
DRAIN PLUG	- ¾" Screwed With Plug (NPT F)
VENT PLUG	- ½" Screwed With Plug (NPT F)
ISOLATION VALVE-3"	3way Ball Valve, Lever Operated



4" DUPLEX STRAINER WITH 3WAY BALL VALVES

BODY	-Carbon Steel
COVER FLANGE	- Carbon Steel
FILTER	-SS316
GASKET	-Spiral Wound SS316 Graphite Filled
FASTENERS	-ASTM A 193 Gr.B8M/ A194 Gr.8M
DRAIN PLUG	- ¾" Screwed With Plug (NPT F)
VENT PLUG	- ½" Screwed With Plug (NPT F)
ISOLATION VALVE-4"	3way Ball Valve, Lever Operated



6" DUPLEX STRAINER WITH 3WAY BALL VALVES

BODY	-Carbon Steel
COVER FLANGE	- Carbon Steel
FILTER	-SS316
GASKET	-Spiral Wound SS316 Graphite Filled
FASTENERS	-ASTM A 193 Gr.B8M/ A194 Gr.8M
DRAIN PLUG	- ¾" Screwed With Plug (NPT F)
VENT PLUG	- ½" Screwed With Plug (NPT F)
ISOLATION VALVE-6"	3way Ball Valve, Lever Operated



## DUPLEX STRAINER



3" DUPLEX STRAINER ISOLATION WITH 6WAY DIVERTOR VALVES

BODY	-WCB
COVER FLANGE	- WCB
FILTER	-SS316
GASKET	-Spiral Wound SS316 Graphite Filled
FASTENERS	-ASTM A 193 Gr.B8M/ A194 Gr.8M
DRAIN PLUG	- 3/4" Screwed With Plug (NPT F)
VENT PLUG	- 1/2" Screwed With Plug (NPT F)
ISOLATION VALVE-	6way Divertor Valve, Lever Operated



4" DUPLEX STRAINER ISOLATION WITH 6WAY DIVERTOR VALVES

BODY	-WCB
COVER FLANGE	- WCB
FILTER	-SS316
GASKET	-Spiral Wound SS316 Graphite Filled
FASTENERS	-ASTM A 193 Gr.B8M/ A194 Gr.8M
DRAIN PLUG	- 3/4" Screwed With Plug (NPT F)
VENT PLUG	- 1/2" Screwed With Plug (NPT F)
ISOLATION VALVE-	6way Divertor Valve, Gear Operated



6" DUPLEX STRAINER WITH BUTTERFLY VALVE

BODY	-SS316
COVER FLANGE	- SS316
FILTER	- SS316
NOZZLE FLANGE	-SS316
GASKET	-Spiral Wound SS316 Graphite Filled
FASTENERS	-ASTM A 193 Gr.B8M/ A194 Gr.8M
DRAIN PLUG	- 3/4" Screwed With Plug (NPT F)
VENT PLUG	- 1/2" Screwed With Plug (NPT F)
ISOLATION VALVE-	6" ,Butterfly Valve, Lever Operated

## DUPLEX STRAINER



2½" DUPLEX STRAINER ISOLATION WITH 6WAY DIVERTOR VALVES

BODY	-WCB
COVER FLANGE	- WCB
FILTER	-SS316
GASKET	-Spiral Wound SS316 Graphite Filled
FASTENERS	-ASTM A 193 Gr.B8M/ A194 Gr.8M
DRAIN PLUG	- ¾" Screwed With Plug (NPT F)
VENT PLUG	- ½ " Screwed With Plug (NPT F)
ISOLATION VALVE-	6way Divertor Valve, coupled Lever Operated



1" DUPLEX STRAINER ISOLATION WITH 6WAY DIVERTOR VALVES

BODY	-WCB
COVER FLANGE	- WCB
FILTER	-SS316
GASKET	-Spiral Wound SS316 Graphite Filled
FASTENERS	-ASTM A 193 Gr.B8M/ A194 Gr.8M
DRAIN PLUG	- ¾" Screwed With Plug (NPT F)
VENT PLUG	- ½ " Screwed With Plug (NPT F)
ISOLATION VALVE-	6way Divertor Valve, Lever Operated



# BASKET STRAINER



## 4" BASKET STRAINER CL300#

BODY	LCB
QUICK COVER	LCB
FILTER	SS316
GASKET	SPIRAL WOUND SS316 GRAPHITE FILLED
NOZZLE FLANGE	LCB
FASTENERS	ASTM A194 Gr.H/ASTM A194Gr.H
DRAIN PLUG	1½" SCREWED WITH PLUG (NPT F)
VENT PLUG	¾" SCREWED WITH PLUG (NPT F)
DP CONNECTION	¼" SCREWED WITH PLUG (NPT F)



## 3" BASKET STRAINER CL150#

BODY	WCB
COVER	WCB
FILTER	SS316
GASKET	SPIRAL WOUND SS316 GRAPHITE FILLED
NOZZLE FLANGE	ASTM A216 Gr.WCB RF
FASTENERS	ASTM A194 Gr.H/ASTM A194Gr.H
DRAIN PLUG	¾" SCREWED WITH PLUG (NPT F)
VENT PLUG	½" SCREWED WITH PLUG (NPT F)



## BASKET STRAINER



### 6" BASKET STRAINER CL150#

BODY	DUCTILE IRON
COVER	DUCTILE IRON
FILTER	SS316
GASKET	SPIRAL WOUND SS316 GRAPHITE FILLED
NOZZLE FLANGE	DUCTILE IRON RF
FASTENERS	ASTM A194 Gr.H/ASTM A194Gr.H
DRAIN PLUG	¾" SCREWED WITH PLUG (NPT F)
VENT PLUG	½" SCREWED WITH PLUG (NPT F)



### 16" BASKET STRAINER CL150#

BODY	WCB
COVER	WCB
FILTER	SS316
GASKET	SPIRAL WOUND SS316 GRAPHITE FILLED
NOZZLE FLANGE	ASTM A216 Gr.WCB FF
FASTENERS	ASTM A194 Gr.H/ASTM A194Gr.H
DRAIN PLUG	2" SCREWED WITH PLUG (NPT F)
VENT PLUG	1½" SCREWED WITH PLUG (NPT F)

# BASKET STRAINER



## 3" BASKET STRAINER CL150#

BODY	A 105
COVER	A 105
FILTER	SS316
GASKET	SPIRAL WOUND SS316 GRAPHITE FILLED
NOZZLE FLANGE	A105 RF
FASTENERS	ASTM A194 Gr.H/ASTM A194Gr.H
DRAIN PLUG	¾" SCREWED WITH PLUG (NPT F)
VENT PLUG	½" SCREWED WITH PLUG (NPT F)



## 8" BASKET STRAINER CL150#

BODY	WCB
COVER	WCB
FILTER	SS316
GASKET	SPIRAL WOUND SS316 GRAPHITE FILLED
NOZZLE FLANGE	ASTM A216 Gr.WCB RF
FASTENERS	ASTM A194 Gr.H/ASTM A194Gr.H
DRAIN PLUG	2" SCREWED WITH PLUG (NPT F)
VENT PLUG	1" SCREWED WITH PLUG (NPT F)



## 3" BASKET STRAINER CL150#

BODY	A 105
COVER	A 105
FILTER	SS316
GASKET	SPIRAL WOUND SS316 GRAPHITE FILLED
NOZZLE	SOCKET WELDED END A105
FASTENERS	ASTM A194 Gr.H/ASTM A194Gr.H
DRAIN PLUG	¾" SCREWED WITH PLUG (NPT F)
VENT PLUG	½" SCREWED WITH PLUG (NPT F)



# BASKET STRAINER



## 24" BASKET STRAINER CL150#

BODY	A 106
QUICK COVER	A 106
FILTER	SS316
GASKET	SPIRAL WOUND SS316 GRAPHITE FILLED
NOZZLE FLANGE	A106 WNRF
FASTENERS	ASTM A194 Gr.H/ASTM A194Gr.H
DAVIT ARM	A106
DRAIN PLUG	2" FLANGE END (NPT F)
VENT PLUG	1" FLANGE END (NPT F)
DP CONNECTION	¾" BALL VALVE WITH FLANGE END
SUPPORTED BASE	SS 316

# 24" BASKET STRAINER CL300#







## 24" BASKET STRAINER CL300#

BODY	BRONZE
QUICK COVER	BRONZE
FILTER	SS316
GASKET	SPIRAL WOUND SS316 GRAPHITE FILLED
NOZZLE FLANGE	BRONZE
FASTENERS	ASTM A194 Gr.H/ASTM A194Gr.H
DAVIT ARM	A106
DRAIN PLUG	2" FLANGE END (WITH COVER)
VENT PLUG	1" NPT PLUG (F)

## Y TYPE STRAINER



### 4" Y TYPE STRAINER CL150#

BODY	WCB
COVER	WCB
FILTER	SS316
GASKET	SPIRAL WOUND SS316 GRAPHITE FILLED
FLANGE CONN.	WCB RF
FASTENERS	ASTM A192 Gr.B7/ASTM A194Gr.2H
DRAIN PLUG	¾" THREADED HEX PLUG (NPT) M



### 4" Y TYPE STRAINER CL150#

BODY	AL.BRONZE
COVER	AL.BRONZE
FILTER	SS316
GASKET	SPIRAL WOUND SS316 GRAPHITE FILLED
FLANGE CONNECTION	AL.BRONZE FF
FASTENERS	ASTM A192 Gr. B7/ASTM A194Gr.2H
DRAIN PLUG	¾" THREADED HEX PLUG (NPT) M



## Y TYPE STRAINER



### 3" Y TYPE STRAINER CL150#

BODY	DUCTILE IRON
COVER	DUCTILE IRON
FILTER	SS316
GASKET	SPIRAL WOUND SS316 GRAPHITE FILLED
FLANGE CONNECTION	DUCTILE IRON RF
FASTENERS	ASTM A192 Gr. B7/ASTM A194Gr.2H
DRAIN PLUG	¾" SCREWED WITH PLUG (NPT F)



### 16" Y TYPE STRAINER CL150#

BODY	WCB
COVER	WCB
FILTER	SS316
GASKET	SPIRAL WOUND SS316 GRAPHITE FILLED
FLANGE CONN.	ASTM A216 Gr.WCB RF
FASTENERS	ASTM A192 Gr. B7/ASTM A194Gr.2H
DRAIN PLUG	1" SCREWED WITH BALL VALVE

## Y TYPE STRAINER



### 1 1/2" Y TYPE STRAINER CL150#

BODY	BRONZE
COVER	BRONZE
FILTER	SS316
GASKET	SPIRAL WOUND SS316 GRAPHITE FILLED
FLANGE CONNECTION	BRONZE RF
FASTENERS	ASTM A192 Gr. B7/ASTM A194Gr.2H
DRAIN PLUG	3/4" THREADED HEX PLUG (NPT) M



### 1" Y TYPE STRAINER CL150#

BODY	WCB
COVER	WCB
FILTER	SS316
GASKET	SPIRAL WOUND SS316 GRAPHITE FILLED
FLANGE CONNECTION	ASTM A216 Gr. WCB RF
FASTENERS	ASTM A192 Gr. B7/ASTM A194Gr.2H
DRAIN PLUG	1/2" THREADED HEX PLUG (NPT) M



### 1" Y TYPE STRAINER CL150#

BODY	MONEL K 400
COVER	MONEL K 400
FILTER	SS316
GASKET	SPIRAL WOUND SS316 GRAPHITE FILLED
FLANGE CONNECTION	MONEL K 400
FASTENERS	ASTM A192 Gr. B7/ASTM A194Gr.2H
DRAIN PLUG	1/2" THREADED HEX PLUG (NPT) M



## Y TYPE STRAINER



### 6" Y TYPE STRAINER CL1500#

BODY	WCB
COVER	WCB
FILTER	SS316
GASKET	SPIRAL WOUND SS316 GRAPHITE FILLED
FLANGE CONN.	WCB
FASTENERS	ASTM A192 Gr. B7/ASTM A194Gr.2H
DRAIN PLUG	2" FLANGE END WITH BALL VALVE



### 1/2" Y TYPE STRAINER CL600#

BODY	BRONZE
COVER	BRONZE
FILTER	SS316
GASKET	TEFOLN
THREADED END	½" NPT F
DRAIN PLUG	½" THREADED HEX PLUG (NPT) M

## Y TYPE STRAINER



### 1" Y TYPE STRAINER CL600#

BODY	CF8M
COVER	CF8M
FILTER	SS316
GASKET	TEFOLN
THREADED END	1" NPT F
DRAIN PLUG	1" THREADED HEX PLUG (NPT) M



### 1" Y TYPE STRAINER CL600#

BODY	A 105
COVER	A 105
FILTER	SS316
GASKET	TEFOLN
END CONNECTION	SOCKET WELD END
DRAIN PLUG	¼ "THREADED HEX PLUG (NPT) M



# Y TYPE STRAINER





